

LD15M range high intensity LED beacon

Ex d, weatherproof



Overview

These certified LED beacons have been designed for use in potentially explosive atmospheres and harsh environmental conditions.

The enclosures are suitable for use offshore or onshore where light weight combined with corrosion resistance is required.

The housings are manufactured from 316L stainless steel or LM25 marine grade aluminium. Stainless steel screws and mounting bracket are incorporated ensuring a totally corrosion free product.

The LD15M incorporates a low maintenance, innovative LED array, which has a life of up to 54,000 hours.

The low current consumption design allows an energy efficient solution without compromising light output. Units can be painted to customers specification and supplied with identification labels.

Features

- Zone 1, 2, 21 & 22
- Ex d IIC T4/T5/T6
- ATEX Certified Ex II 2GD
- IECEx Certified Gb, Db
- IP66 & 68
- SIL2 certification pending
- Certified temperature -55°C to +85°C
- 316L stainless steel or LM25 aluminium
- Removable 316L stainless steel backstrap
- Swappable coloured lens covers
- Customer removable wire lens guard
- 2x M20 or 2x ¾" NPT (side) + 1x ¾" NPT (base)
- 5 user selectable functions:
 - 60 fpm
 - 80 fpm
 - 120 fpm
 - Double flash
 - Steady
- Remote and local function selection

Eaton's Crouse-Hinds series Authorized distributor in China: beiyuan electric co., ltd. / cst@ksbyel.com



Powering Business Worldwide

Eaton
Unit B, Sutton Parkway
Oddicroft Lane
Sutton in Ashfield
United Kingdom
NG17 5FB

T: +44 (0) 1623 444 400
www.eaton.com/signalling

© 2025 Eaton
All Rights Reserved
Printed in UK
Publication
No.DSMC0060/A
October 2025

Eaton is a registered trademark.

All other trademarks are property of their respective owners.

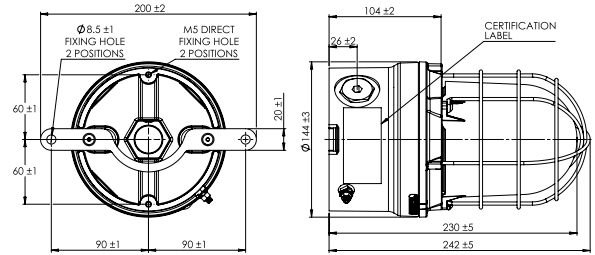
Certifications

ATEX Ex d	Cert. no. Baseefa 04ATEX0009X Certified to: EN60079-0, EN60079-1, EN60079-28, EN60079-31 Ex II 2GD Ex db IIC T4/T5/T6 Gb, Ex tb IIIC T85°C/T100°C/ T135°C Db
IECEX Ex d	Cert. no. IECEx BAS 05.0048X Certified to: IEC60079-0, IEC60079-1, IEC60079-28, IEC60079-31 Ex II 2GD Ex db IIC T4/T5/T6 Gb, Ex tb IIIC T85°C/T100°C/ T135°C Db
INMETRO Ex db	Ex db IIC T3/T4/T5/T6 Gb, Ex tb IIIC T200°C/T135°C/T100°C/T85°C Db
SIL	SIL2 certified to IEC61508. Cert. number TBC

Specifications

Material	Body: 316L stainless steel or LM25 aluminum Lens: borosilicate glass Lens cover: polycarbonate Backstrap: 316L stainless steel Wire guard: 316L stainless steel wire
Finish	Cover ring may be painted to customer specification. Body is always black.
Voltage	12V d.c. to 48V d.c., 110V a.c. to 254V a.c
LED life	Up to 54,000 hours
Function	Steady, 60, 80 & 120 fpm, double flash
Certified temp	-55°C to +85°C (T4) -55°C to +70°C (T5) -55°C to +55°C (T6)
Weight	Aluminium: 3kg; stainless steel: 5.25kg
Ingress protection	IP66 & IP67
Entries	2x M20 (with 1x certified plug fitted) 2x 3/4" NPT (side) + 1x 3/4" NPT (base) (with 2x certified plug fitted)
Terminals	Entries option A: 12 x 2.5mm ² /14AWG Entries option C: 8 x 14AWG
Labels	Tag/duty optional
EOL Resistor	Customers may fit a monitoring resistor to DC units. The maximum total power dissipation through the resistor must be limited to 2W.

General arrangement drawing (all dimensions in mm)



ALL DIMENSIONS IN MILLIMETRES

Electrical:

Nominal voltage	d.c.			a.c. (50Hz)				
	12	24	48	110	130	230	240	254
Average current steady (mA)	430	220	120	70	70	40	40	40
Average current 60fpm (mA)	880	420	220	90	90	50	50	50
Average current 80fpm (mA)	880	420	220	90	90	50	50	50
Average current 120fpm (mA)	880	420	220	90	90	50	50	50
Average current double (mA)	710	340	180	40	40	30	30	30

Typical light output (effective Cd) (no guard)

Colour	Red	Blue	Green	Amber	Clear	Yellow
60 fpm	61	24	86	55	128	122
80 fpm	55	22	78	49	117	112
120 fpm	47	19	66	42	100	95
Steady	41	17	59	39	86	82

Ordering requirements

The following code is designed to help in selection of the correct unit. Build up the reference number by inserting the code for each component into the appropriate box.

Model	Material	Certification	Voltage	Lens colour	Lens guard	Entries	Options	Finish																																																																										
LD15M																																																																																		
	<table border="1"> <tr> <th>Material</th> <th>Code</th> </tr> <tr> <td>Stainless steel</td> <td>S</td> </tr> <tr> <td>Aluminium</td> <td>A</td> </tr> </table>	Material	Code	Stainless steel	S	Aluminium	A	<table border="1"> <tr> <th>Certification</th> <th>Code</th> </tr> <tr> <td>Dual ATEX/IECEx</td> <td>AJ</td> </tr> <tr> <td>INMETRO</td> <td>DM</td> </tr> <tr> <td>Weatherproof</td> <td>W</td> </tr> </table>	Certification	Code	Dual ATEX/IECEx	AJ	INMETRO	DM	Weatherproof	W	<table border="1"> <tr> <th>Voltage</th> <th>Code</th> </tr> <tr> <td>12-48Vdc</td> <td>DC</td> </tr> <tr> <td>110-254Vac</td> <td>AC</td> </tr> </table>	Voltage	Code	12-48Vdc	DC	110-254Vac	AC	<table border="1"> <tr> <th>Lens colour</th> <th>Code</th> </tr> <tr> <td>Red</td> <td>R</td> </tr> <tr> <td>Blue</td> <td>B</td> </tr> <tr> <td>Green</td> <td>G</td> </tr> <tr> <td>Amber</td> <td>A</td> </tr> <tr> <td>Clear</td> <td>C</td> </tr> <tr> <td>Yellow</td> <td>Y</td> </tr> </table>	Lens colour	Code	Red	R	Blue	B	Green	G	Amber	A	Clear	C	Yellow	Y	<table border="1"> <tr> <th>Guard</th> <th>Code</th> </tr> <tr> <td>Wire</td> <td>W</td> </tr> </table>	Guard	Code	Wire	W	<table border="1"> <tr> <th>Entries</th> <th>Code</th> </tr> <tr> <td>2x M20</td> <td>A</td> </tr> <tr> <td>2x 3/4" NPT (side) + 1x 3/4" NPT (base)</td> <td>C</td> </tr> </table>	Entries	Code	2x M20	A	2x 3/4" NPT (side) + 1x 3/4" NPT (base)	C	<table border="1"> <tr> <th>Option</th> <th>Code</th> </tr> <tr> <td>None</td> <td>N</td> </tr> <tr> <td>Tag label</td> <td>T*</td> </tr> <tr> <td>Duty label</td> <td>D*</td> </tr> <tr> <td>Relay initiate</td> <td>R††</td> </tr> <tr> <td>Telephone initiate</td> <td>I†</td> </tr> <tr> <td>EOL</td> <td>E*</td> </tr> </table>	Option	Code	None	N	Tag label	T*	Duty label	D*	Relay initiate	R††	Telephone initiate	I†	EOL	E*	<table border="1"> <tr> <th>Finish</th> <th>Code</th> </tr> <tr> <td>Black</td> <td>N</td> </tr> <tr> <td>Red</td> <td>R</td> </tr> <tr> <td>Blue</td> <td>B</td> </tr> <tr> <td>Yellow</td> <td>Y</td> </tr> <tr> <td>Green</td> <td>G</td> </tr> <tr> <td>White</td> <td>W</td> </tr> <tr> <td>Special</td> <td>S*</td> </tr> </table> <p>*Please specify</p>	Finish	Code	Black	N	Red	R	Blue	B	Yellow	Y	Green	G	White	W	Special	S*
Material	Code																																																																																	
Stainless steel	S																																																																																	
Aluminium	A																																																																																	
Certification	Code																																																																																	
Dual ATEX/IECEx	AJ																																																																																	
INMETRO	DM																																																																																	
Weatherproof	W																																																																																	
Voltage	Code																																																																																	
12-48Vdc	DC																																																																																	
110-254Vac	AC																																																																																	
Lens colour	Code																																																																																	
Red	R																																																																																	
Blue	B																																																																																	
Green	G																																																																																	
Amber	A																																																																																	
Clear	C																																																																																	
Yellow	Y																																																																																	
Guard	Code																																																																																	
Wire	W																																																																																	
Entries	Code																																																																																	
2x M20	A																																																																																	
2x 3/4" NPT (side) + 1x 3/4" NPT (base)	C																																																																																	
Option	Code																																																																																	
None	N																																																																																	
Tag label	T*																																																																																	
Duty label	D*																																																																																	
Relay initiate	R††																																																																																	
Telephone initiate	I†																																																																																	
EOL	E*																																																																																	
Finish	Code																																																																																	
Black	N																																																																																	
Red	R																																																																																	
Blue	B																																																																																	
Yellow	Y																																																																																	
Green	G																																																																																	
White	W																																																																																	
Special	S*																																																																																	

*Please specify.

†Suitable for 24Vdc initiate supplies only

‡Not available with SIL