

XD deflection couplings

Applications:

XD Couplings can be installed indoors, outdoors, buried underground or embedded in concrete in non-hazardous areas. XDs are used with standard rigid conduit or PVC rigid conduit. (PVC requires rigid metal conduit nipples and rigid metal-to-PVC conduit adapters). XDs provide a flexible and watertight connection for protection of conduit wiring systems from damage due to movement.

Typical applications include:

- Underground conduit feeder runs
- Runs between sections of concrete subject to relative movement
- Runs between fixed structures
- Conduit entrances in high rise buildings
- Bridges
- Marinas, docks, piers

Features:

- XD couplings accommodate the following movements without collapsing or fracturing the conduit, and damaging the wires it contains:
 1. Axial expansion or contraction up to $\frac{3}{4}$ "
 2. Angular misalignment of the axes of the coupled conduit runs in any direction to 30°
 3. Parallel misalignment of the axes of coupled conduit runs in any direction to $\frac{3}{4}$ "
- Inner sleeve provides a smooth insulated wireway for protection of wire insulation
- Watertight flexible neoprene outer jacket is corrosion-resistant and protects the grounding strap and the attachment points of the hubs
- Tinned copper flexible braid grounding straps assure grounding continuity
- Stainless steel jacket clamps for strength and corrosion resistance
- Standard tapered electrical threads fit standard rigid conduit
- Integral hub bushing protects insulation of conductors

Certifications and compliances:

- UL Standard 514B
- CSA 22.2 No. 18 3-12
- Wet locations

Size ranges:

- 1" to 6" (smaller sizes can be obtained by using reducing bushings)

Standard materials and finishes:

Hubs:

- Feraloy® iron alloy – hot dip galvanized

Outer jacket:

- Molded neoprene – natural (black)

Jacket clamps:

- Stainless steel – natural

Inner sleeve:

- Neoprene polyester fabric with steel coil

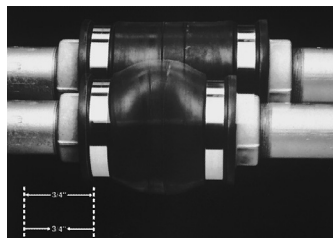
Bonding strap:

- Braided tinned copper

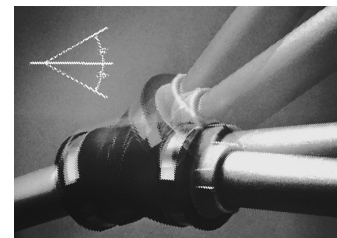
Hot dip galvanized now standard!



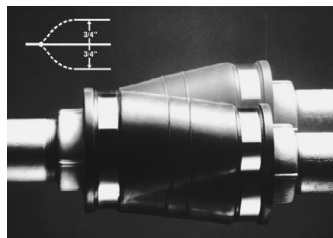
XD coupling



1. Axial expansion/contraction

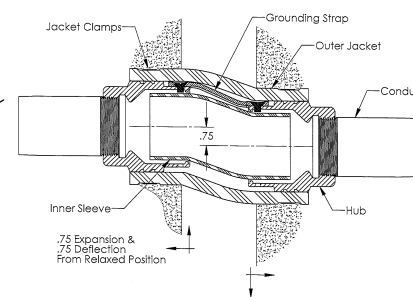
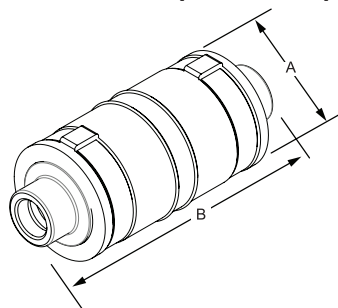


2. Angular misalignment



3. Parallel misalignment

Dimensions (in inches):



Conduit size	Cat. #	A Dia	B Length
1"	XD3 HDG [®]	3.63"	8.63"
1 1/4"	XD4 HDG	3.96"	8.75"
1 1/2"	XD5 HDG	4.19"	8.78"
2"	XD6 HDG	4.63"	9.16"
2 1/2"	XD7 HDG	5.69"	9.53"
3"	XD8 HDG	5.72"	10.13"
3 1/2"	XD9 HDG	6.22"	10.81"
4"	XD010 HDG	6.75"	11.88"
5"	XD012 HDG	7.75"	12.50"
6"	XD014 HDG	9.00"	13.50"

[®] 3/4" trade size can be created using third party certified 1" - 3/4" reducing bushings.