

Condulet OE conduit bodies with covers

Cl. I, Div. 1 & 2, Groups C, D
 Cl. II, Div. 1, Groups E, F, G
 Cl. II, Div. 2, Groups F, G
 Cl. III
 NEMA 7CD, 9EFG

Explosionproof
 Dust-ignitionproof

3F
 3F

Applications:

OE conduit bodies are installed in conduit systems within hazardous areas to:

- Protect conductors in threaded rigid conduit
- Act as pulling and splice fittings
- Interconnect lengths of conduit
- Change direction of conduit
- Provide access for maintenance and future system changes

Features:

OE conduit outlet bodies have:

- Taper threaded hubs for ground continuity
- Smooth integral hub bushings to protect conductor insulation when pulling
- Five different hub arrangements
- Accurately machined body with blind tapped screw holes
- Most compact design of all hazardous area outlet bodies

Certifications and compliances:

NEC/CEC:

- Class I, Divisions 1 & 2, Groups C, D
- Class II, Division 1, Groups E, F, G
- Class II, Division 2, Groups F, G
- Class III

UL standard:

- UL1203

CSA standard:

- C22.2 No. 30

Standard materials:

- Feraloy® iron alloy (1/2" and 3/4" fittings)
- Copper-free aluminum (1" fittings)

Standard finish:

- Electrogalvanized

Options:

Description

Suffix

- Corro-free™ epoxy powder coat..... **S752**

Size ranges:

- Hub – 1/2" to 1"

Ordering information:

OEC



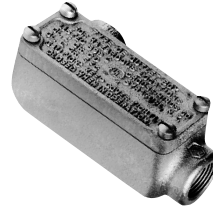
| Hub size | Cat. # |
|----------|---------|
| 1/2" | OEC1 |
| 3/4" | OEC2 |
| 1" | OEC3 SA |

OELB



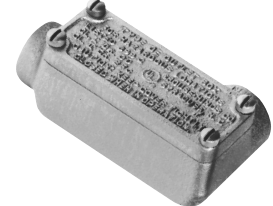
| Hub size | Cat. # |
|----------|----------|
| 1/2" | OELB1 |
| 3/4" | OELB2 |
| 1" | OELB3 SA |

OELL



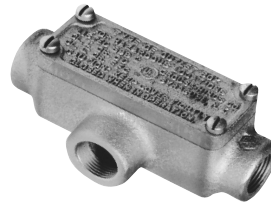
| Hub size | Cat. # |
|----------|----------|
| 1/2" | OELL1 |
| 3/4" | OELL2 |
| 1" | OELL3 SA |

OELR



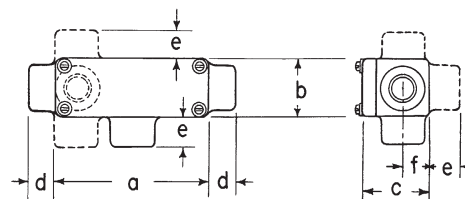
| Hub size | Cat. # |
|----------|----------|
| 1/2" | OELR1 |
| 3/4" | OELR2 |
| 1" | OELR3 SA |

OET



| Hub size | Cat. # |
|----------|---------|
| 1/2" | OET1 |
| 3/4" | OET2 |
| 1" | OET3 SA |

Dimensions (in inches):



| Hub size | a | b | c | d | e | f |
|----------|--------|--------|---------|---------|-------|-----|
| 1/2" | 4 1/8 | 1 9/16 | 1 13/16 | 1 11/16 | 7/8 | 5/8 |
| 3/4" | 4 5/16 | 1 7/8 | 2 1/16 | 1 11/16 | 7/8 | 3/4 |
| 1" | 5 1/32 | 2 3/8 | 2 13/32 | 3/4 | 31/32 | 7/8 |

Condulet EKC conduit bodies with covers

Cl. I, Div. 1 & 2, Groups C, D
 Cl. II, Div. 1, Groups E, F, G
 Cl. II, Div. 2, Groups F, G
 Cl. III
 NEMA 7CD, 9EFG

Explosionproof
 Dust-ignitionproof

3F

Applications:

EKC conduit outlet bodies are installed in conduit systems within hazardous areas to:

- Provide convenient opening in conduit system for pulling or splicing conductors

Features:

EKC bodies have:

- Accurately machined body and cover mating surfaces to ensure flametight joint when properly assembled
- Extra long cover opening to facilitate pulling and splicing of conductors
- Taper threaded hubs and integral bushing for rigid threaded conduit

Certifications and compliances:

NEC:

EKC30-EKC60

- Class I, Divisions 1 & 2, Groups C, D
- Class II, Division 1, Groups E, F, G
- Class II, Division 2, Groups F, G
- Class III

EKC70, EKC80

- Class I, Divisions 1 & 2, Group D
- Class II, Division 1, Groups E, F, G
- Class II, Division 2, Groups F, G
- Class III

UL standard:

- UL1203

CSA standard:

- C22.2 No. 30

Standard material:

- Bodies – Feraloy® iron alloy

Standard finish:

- Feraloy – electrogalvanized and aluminum acrylic paint

Options:

Description

Suffix

- Corro-free™ epoxy powder coat..... **S752**

Size ranges:

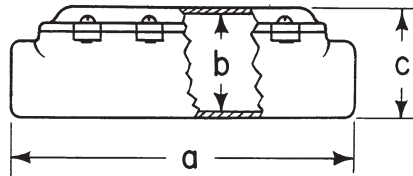
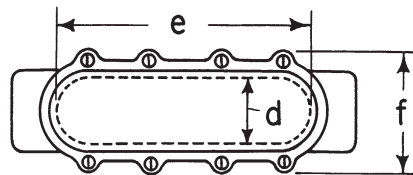
- Hub size – 1" to 3"

Ordering information:

| Hub size | Cat. # |
|----------|--------|
| 1" | EKC30 |
| 1 1/4" | EKC40 |
| 1 1/2" | EKC50 |
| 2" | EKC60 |
| 2 1/2" | EKC70 |
| 3" | EKC80 |



Dimensions (in inches):



| Hub size | a | b | c | d | e | f |
|-------------|----------------------------------|--------------------------------|--------------------------------|-------------------------------|----|-------------------------------|
| 1" - 1 1/4" | 12 ⁵ / ₈ | 3 ¹ / ₁₆ | 3 ³ / ₁₆ | 1 ³ / ₄ | 9 | 4 |
| 1 1/2" - 2" | 15 ¹⁵ / ₁₆ | 3 ⁷ / ₈ | 4 ⁵ / ₁₆ | 2 ¹ / ₂ | 12 | 5 |
| 2 1/2" - 3" | 21 ³ / ₄ | 5 ¹ / ₂ | 6 | 3 ³ / ₄ | 16 | 6 ⁵ / ₈ |