

# Arktite heavy duty circuit breaking plugs and receptacles

NEMA 4 Watertight

1P

Industrial heavy duty  
Non-hazardous areas

## Applications:

Arktite® circuit breaking plugs and receptacles are used:

- To supply power to portable electrically operated devices such as motor generator sets, compressors, heating and cooling units, welders, conveyors, lighting systems and similar equipment
- Where temporary power is needed, such as at trailers, building units, heavy machinery and similar equipment
- Wherever electrical loads must be quickly disconnected from power source
- In a typical installation, where a large machine utilizes a number of electrical motor drives and for ease of adjustment, removal, maintenance and replacement, each motor is connected by portable cord and Arktite receptacles rather than permanently wired
- In areas where dust, dirt, moisture and corrosion are a problem
- Indoors and outdoors in non-hazardous areas of chemical plants, process industry facilities, meat packing plants, manufacturing plants and similar industrial locations

## Features:

- Circuit breaking – plugs through 100 ampere rating may be disconnected under load; 150-400 ampere units are for service disconnect use only
- Receptacles accept only plugs of the same amperage rating, style and number of poles, making it impossible to mismatch, and provides for positive polarization
- Extra wide electrical spacing allows for maximum safety
- Insulator materials are the result of intensive testing; selection has been made based on highest dielectric strength, maximum mechanical and impact resistance, lowest moisture absorption and highest arc tracking resistance
- A variety of installations is possible due to the availability of several types of back boxes
- Designed to withstand rough usage and the effects of adverse environments
- Reversible interiors – 30, 60 and 100 ampere (except 30 and 60 ampere, 5-pole); Arktite plug and receptacle interiors are interchangeable using a screwdriver, making it possible to feed a normally de-energized receptacle from an energized plug with usual Arktite safety; no energized contacts are exposed

## Certifications and compliances:

- UL standards: UL1203<sup>A</sup>, UL1682, UL1686
- CSA standard: C22.2 No. 182.1
- CE (LVD) 2006/95/EEC<sup>B</sup>



<sup>A</sup> APJ and NPJ plugs only.

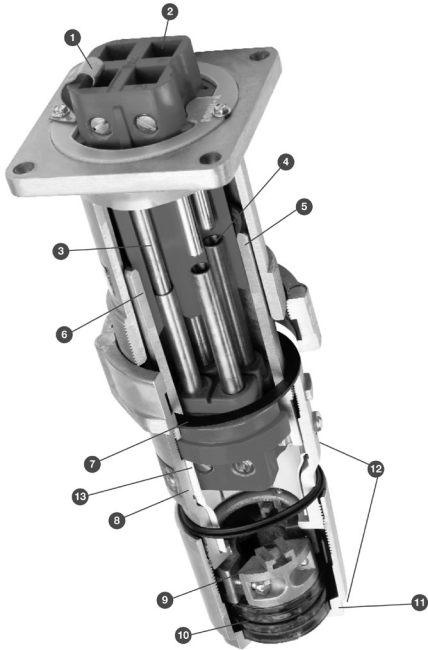
<sup>B</sup> Excludes 200A and 400A APR connectors.

# Arktite heavy duty circuit breaking plugs and receptacles

NEMA 4 Watertight

1P  
1P

Industrial heavy duty  
Non-hazardous areas



## Split pin contact design:

- Provides nearly 360° of contact at every insertion, ensuring protection against heat rise and eliminating arcing on critical surfaces
- Continuous contact over length and circumference of mated pins provides superior safety and long-term performance
- Self-wiping at every insertion to prevent environmental contamination build-up



## The additional features below are called out in the illustration on this page:

- 1 The ground contact is bonded to the receptacle housing (Style 2).
- 2 Unimpeded, easy access phase and ground terminals make wire termination quick and easy.
- 3 Grounding contacts that make first to break last in the unlikely event of runaway failure.
- 4 An arc formed when the plug is being removed is instantly snuffed in the deep confined insulated arcing chamber.
- 5 A detent spring forms a parallel grounding path through the metallic plug sleeve and receptacle housing and is the first contact to make and the last to break.
- 6 The plug sleeve is keyed to the receptacle to prevent mispolarization.
- 7 The gasketing system provides unsurpassed watertight integrity (NEMA 4).
- 8 All aluminum Uni-Shell™ construction provides superior strength in abusive environments.
- 9 The Tri-Lock™ cable grip has three piece design that equally distributes gripping power around perimeter of cable. Cord jacket does not get pinched eliminating potential for damage to both internal conductors and external cable jacket. Cable grip is located inside plug housing, eliminating corrosion of vital hardware and making plug maintenance easy.
- 10 The unique Sure-Seal™ cable gland has two gasket sizes which fit entire range of cable diameters, reducing risk of improper assembly. The gasket ratchets into the Tri-Lock cable grip to prevent plug from turning or loosening in high vibration areas.
- 11 Wrenching surfaces make Arktite plugs quick and easy to assemble.
- 12 Smooth and contoured design of plug housing eliminates occurrence of cable grip snagging or breaking off. Tri-Lock screws are captive so cable grip cannot come apart during assembly. Prevents critical screws from getting lost during installation.
- 13 Plastic sleeve between insulator body and housing minimizes possibility of electrical shock in event of ground failure. Increases creepage and clearance protection.

## Arktite advantage features:

### Internal plug safety insulator

- Plastic barrier between insulator body and metal housing minimizes risk of energizing handle body due to stray conductor strands
- Increases creepage and clearance protection

### CE marked

- Offers a borderless solution with no additional inspection or documentation required for approval

### Lockout plug

- Allows users to comply with OSHA lockout/tagout requirements
- Ensures plug cannot be inserted into receptacle when maintenance is being performed downstream of power supply

### Tri-Lock cable grip

- Three-piece design equally distributes grip around perimeter of cable
- Cable jacket does not get pinched, eliminating potential for damage to internal conductors
- Captive screws allow maximum extension of cord grip without risk of loose components

### Sure-Seal cable gland

- Two gasket sizes fit entire cable range, reducing risk of improper assembly
- Gasket ratchets into Tri-Lock cable grip to provide environmental protection in high vibration areas

### Plug housing

- Smooth design eliminates occurrence of cable grip snagging or breaking off
- Houses Tri-Lock cable grip to eliminate corrosion of vital hardware and increase ease of maintenance

### Combination drive stainless steel hardware

- Increases ease of installation by allowing for more than one option for installation tools
- Stainless steel external hardware eliminates corrosion on critical components and extends product life

### Insulator assemblies

- Unimpeded, easy access phase and ground terminals make wire termination quick and easy
- Lug screws secured with tape to prevent them from vibrating loose and falling out during shipping

### Combination slot and hex mechanical lugs

- Increases ease of installation by allowing for more than one option for installation tools
- Hex head allows for easy achievement of specified torque value

### Receptacle cover

- Automatic weatherproof seal every time plug is disengaged
  - Field replaceable design allows for new cover to be threaded on quickly and easily
- 60, 100 and 150A offering.



# Arktite heavy duty circuit breaking plugs and receptacles

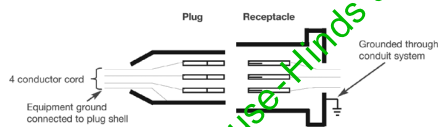
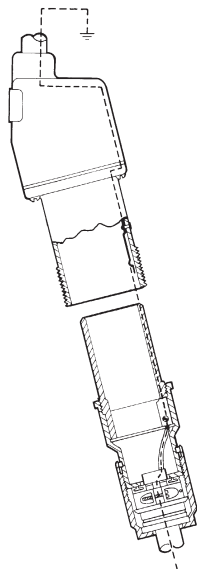
Industrial heavy duty  
Non-hazardous areas

## Grounding – Style 1 vs. Style 2:

Eaton's Crouse-Hinds series Arktite devices utilize two methods, or styles, for completing the grounding circuit in plugs and receptacles. NEC reference 250.138 (A) and (B).

### Style 1 – metallic

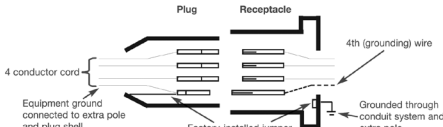
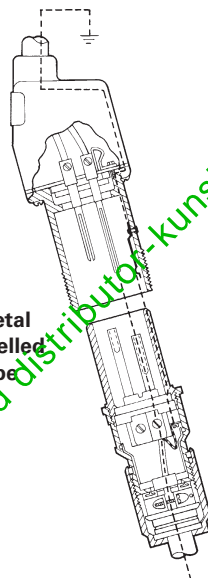
A Style 1 plug is one in which the grounding conductor in the flexible cable is bonded to the plug sleeve by a pressure connector. A Style 1 receptacle is one which is grounded by virtue of the fact that it is an integral part of a grounded conduit system. On insertion, the plug sleeve makes contact with detent springs of the grounded receptacle housing before line and load poles engage, and on withdrawal, remains in contact until after line and load poles disengage. Therefore, exposed metal parts of the portable equipment or plug are suitably grounded.



**Style 1**  
ground conductor  
attaches to shell

### Style 2 – metallic

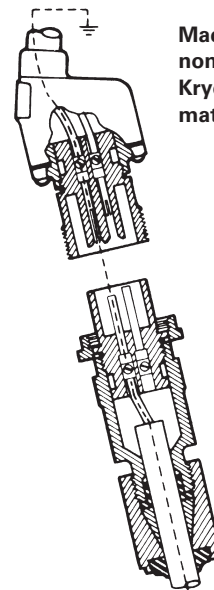
A Style 2 metallic housing plug is one in which the grounding conductor in the flexible cable is bonded to the extra (grounding) pole and metal plug sleeve by a pressure connector. A Style 2 metallic housing receptacle is one in which the extra (grounding) pole is electrically connected to the equipment grounding conductor and the metal receptacle housing which itself is grounded by virtue of the fact that it is an integral part of a grounded conduit system. In Style 2 non-metallic housing plugs and receptacles, the extra pole is used for grounding since the housings are non-conductive.



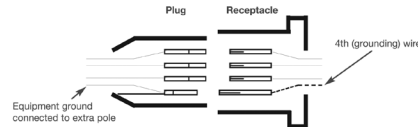
**Style 2**  
ground conductor  
attaches to contact,  
which is bonded to  
shell

### Style 2 – non-metallic

In a Style 2 receptacle, the grounding connection is made before line and load poles engage, and is broken after the line load poles disengage. Furthermore, upon insertion, the plug sleeve of metal shelled units makes contact with detent springs of the grounded receptacle housing before line and load poles engage, and on withdrawal, remains in contact until after line and load poles disengage. Therefore, exposed metal parts of the portable equipment or plug are suitably grounded.



Made of  
non-metallic  
Krydon  
material



# Arktite heavy duty circuit breaking plugs and receptacles

NEMA 4 Watertight

1P  
1P

Industrial heavy duty  
Non-hazardous areas

## Standard materials:

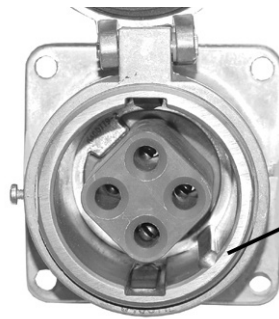
- Metallic receptacle housings, plug and cord connector bodies – high impact strength copper-free aluminum
- Non-metallic receptacles, plugs and cord connectors – Krydon® fiberglass-reinforced polyester
- Back boxes (20, 30, 60, 100, 150, 200 amperes) – cast aluminum; 400 amperes – Feraloy iron alloy
- Insulation (metallic products) (2-, 3-, 4-pole) 30, 60, 100, 200, 400 amperes – fiberglass-reinforced polyester; 20, 30 amperes (5-pole) – melamine
- Contacts: pressure, solder, binding screw – brass; crimp/solder 20, 30, 60, 100 amperes – leaded red brass; crimp/solder 150, 200, 400 amperes – telurium copper

## Standard finishes:

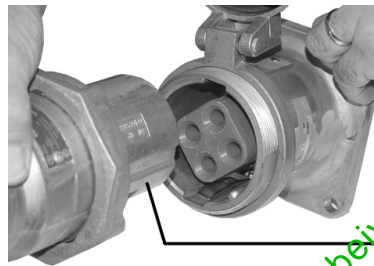
- Feraloy – electrogalvanized and aluminum acrylic paint
- Aluminum – natural
- Krydon fiberglass-reinforced polyester – gray
- Fiberglass-reinforced polyester insulation – (red)
- Melamine – natural (brown)
- Brass – natural
- Leaded red brass – electro-tin-plate

## Options:

- | Description  | Suffix      |
|--|-------------|
| <ul style="list-style-type: none"> <li>• Reverse service.....</li> </ul> <p>Receptacle assembled with plug interior (exposed contacts); plug assembled with receptacle interior (recessed contacts)</p> <p>For applications where plug is energized to feed normally de-energized receptacle</p> <p>Available on 30A-400A units</p>  | <b>S22</b>  |
| <ul style="list-style-type: none"> <li>• Special polarity.....</li> </ul> <p>Receptacle interior rotated 28° to right and plug changed to match (see photo at right)</p> <p>For use where two or more receptacles of the same ampere rating, style and number of poles are to be installed in the same area for use on different voltages and/or frequencies</p> <p>Prevents insertion of a plug in a receptacle with different electrical rating</p> <p>Available on 20A-400A units</p> | <b>S4</b>   |
| <ul style="list-style-type: none"> <li>• Epoxy-free™ epoxy powder finish for added corrosion resistance.....</li> </ul> <p>Available on 20A-400A units</p>   | <b>S752</b> |



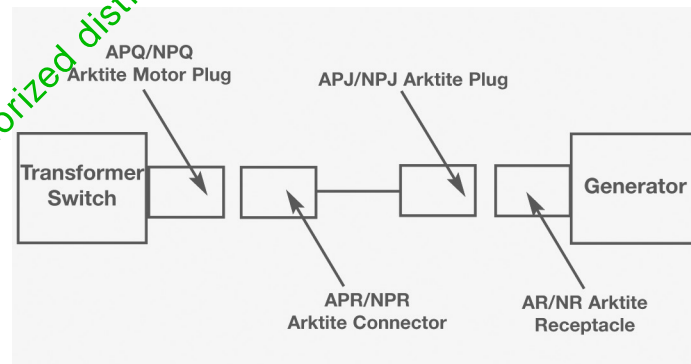
Arktite receptacles have a cast raised rib located inside the receptacle sleeve. The location of the rib is in a specific relationship to the receptacle insulator that houses the contacts.



The mating plug has a cast groove located on the outside of the plug sleeve. This groove lines up with the raised rib.

## Accessories:

- Accessories include a variety of angle adapters, panel adapters and back boxes for Arktite receptacles (see pages 28-31)
- Included throughout Section 1P are wire mesh cable grips and protective caps for Arktite plugs



Typical installation

Ⓛ 150A, 200A and 400A rated units are for service disconnect use only.

# Arktite heavy duty circuit breaking<sup>®</sup> plugs and receptacles

NEMA 4 Watertight

Industrial heavy duty  
Non-hazardous areas

## Horsepower ratings: Locked rotor interrupting

Amperage plug and receptacle	Motor horsepower <sup>Ⓕ</sup>			
	120V	240V	480V	600V
<b>Single-phase electrical system</b>				
30	2	3	7.5	10
60	5	10	25	20
100	10	20		
200	15	40		
<b>Three-phase electrical system</b>				
30	3	5	10	10
60	10	20	40	50
100	15	30	40	25
200	30	60	25	15

## Maximum horsepower for plug and receptacle combinations by input voltage<sup>Ⓖ</sup>:

The following values are typical horsepower ratings based on NEC Article 430 tables. HP ratings are based on the largest conductor size for each plug and receptacle combination per the wire size table below.

Amperage plug and receptacle	Motor horsepower <sup>Ⓕ</sup>		
	240V	480V	600V
30	15	30	40
60	20	40	50
100	30	60	75
150	40	75	100
200	60	100	150

## Wire sizes:

The table below lists the diameter of the wire recess in Arktite plug and receptacle contacts so that maximum size of bare conductor can be figured. Range of wire sizes shown in table is intended only as a guide. Depending on type of wire used (building wire, flexible or extra flexible cable) and its construction (number and size of strands), bare copper diameters vary widely.

## Diameter of wire recess in plug and receptacle contacts:

Amperage	Contact type	Diameter of recess	Wire size <sup>Ⓘ</sup>	
			Building	Extra flex
20	Binding screw	N/A	#14 - #12	#14 - #12
30 (2-, 3-, 4-pole)	Pressure	0.281	#10 - #6	#10 - #8
30 (2-, 3-, 4-pole)	Crimp/solder	0.188	#10 - #8 <sup>Ⓢ</sup>	#10 - #8
30 (5-pole)	Solder	0.188	#12 - #6	#12 - #8
60 (2-, 3-, 4-, 5-pole)	Pressure	0.212	#6 - #4	#8 - #4
60 (3-, 4-pole)	Crimp/solder	0.277	#6 - #4 <sup>Ⓢ</sup>	#8 - #4
100 (2-, 3-, 4-pole)	Pressure	0.390	#4 - #1	#4 - #2
100 (3-, 4-pole)	Crimp/solder	0.390	#2 - #1 <sup>Ⓢ</sup>	#2 - #2
150 (4-pole)	Pressure	0.390	#2 - 2/0	#2 - 1/0
200 (3-, 4-pole)	Pressure	0.687	2/0 - 4/0	2/0 - 3/0
200 (Std. 3-, 4-pole)	Crimp/solder	0.560	#1 - 4/0	#1 - 3/0
200 (Lg. 3-, 4-pole)	Crimp/solder	0.750	4/0 - 250MCM	3/0 - 250MCM
400 (Std. 3-, 4-pole)	Crimp/solder	0.840	250 - 500MCM	250 - 400MCM
400 (Lg. 3-, 4-pole)	Crimp/solder	1.250	500 - 1000MCM	400 - 750MCM

<sup>Ⓖ</sup> 150A, 200A and 400A rated units are for service disconnect use only.

<sup>Ⓕ</sup> Horsepower ratings are based on Eaton's Crouse-Hinds Division testing in which locked rotor currents were interrupted by withdrawing the plug from the receptacle. It is highly recommended, however, that such use be limited to emergency conditions only, and that a horsepower rated switch be used for motor disconnect.

<sup>Ⓖ</sup> This guide is for reference only. Consult your local electrical codes before installation.

<sup>Ⓢ</sup> Eaton's Crouse-Hinds Division does not recommend our plug and receptacle be used for disconnect under load.

<sup>Ⓘ</sup> Do not use wire size smaller than minimum size recommended.

<sup>Ⓢ</sup> Smaller sizes may be used with well reducers – information available upon request.

# Arktite heavy duty circuit breaking receptacles, plugs and connectors

20A, 600 VAC/250 VDC, 50-400 Hz

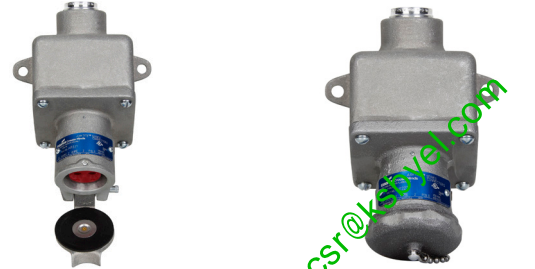
NEMA 4 Watertight

1P  
1P

## Ordering information:

### Receptacles with back box

Configuration	Hub size	Description	Cat. #
2W, 2P	1/2"	Spring door	ARE2211
	1/2"	Threaded cap	ARE2271
2W, 2P	3/4"	Spring door	ARE2212
	3/4"	Threaded cap	ARE2272



### Receptacles

Configuration	Description	Cat. #
2W, 2P	Spring door	AR221
	Threaded cap	AR227

For applicable 20A back boxes, see page 28.



### Plugs

Configuration	Cable dia.	Description	Cat. #
2W, 2P	0.250 - 0.500"	Fastening ring	APJ2271
	0.250 - 0.500"	Without fastening ring	APJ2251
2W, 2P	0.500 - 0.875"	Fastening ring	APJ2273
	0.500 - 0.875"	Without fastening ring	APJ2253

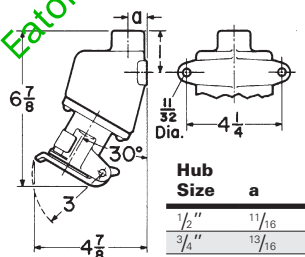


### Connectors

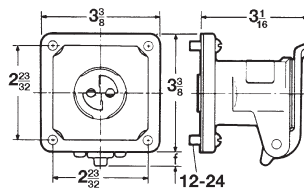
Configuration	Cable dia.	Description	Cat. #
2W, 2P	0.250 - 0.500"	Connector	APR2251
	0.500 - 0.850"	Connector	APR2253



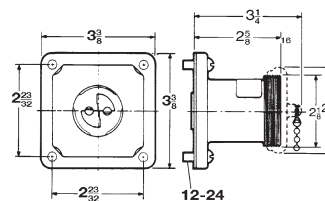
## Dimensions (in inches):



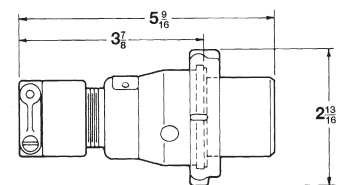
ARE assembly



AR receptacle - spring door



AR receptacle - open and with cap



APJ plug

Ⓐ When used on systems less than 60 Hz, the receptacles, plugs and connectors are for disconnect use only.

# Arktite heavy duty circuit breaking receptacle assemblies and housings

NEMA 4 Watertight

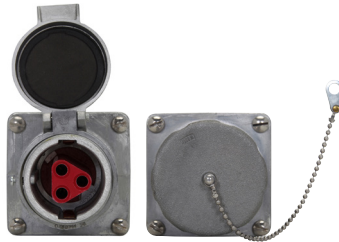
1P

30A, 600 VAC/250 VDC, 50-400 Hz

## Ordering information:



Receptacle assembly



Receptacle



Mating plug

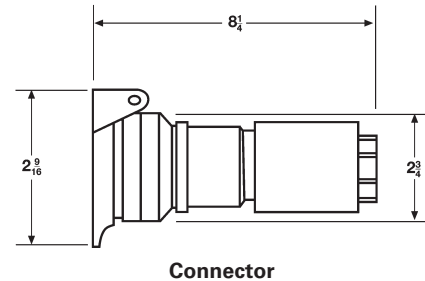
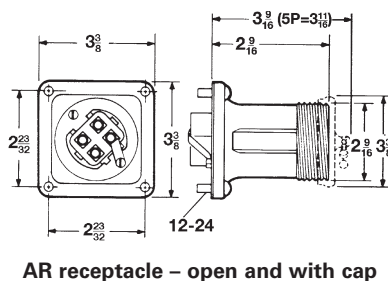
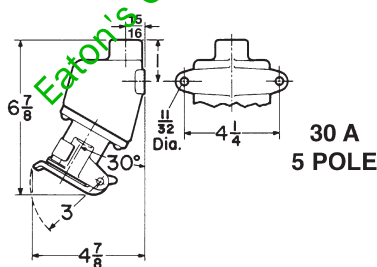
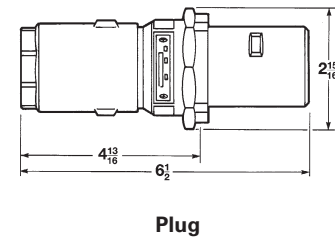
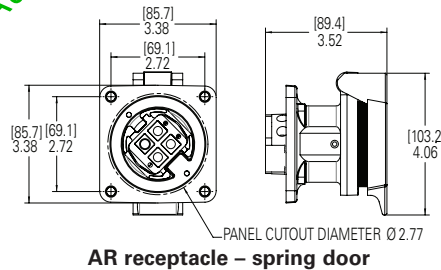
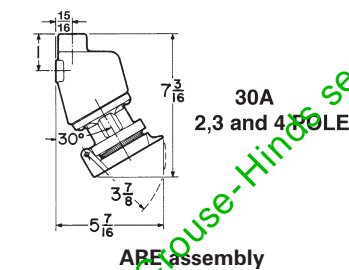


Mating connector

With ARE back boxes			Receptacle housings only		Mating APJ plugs <sup>Ⓐ</sup>		Mating APR connectors	
Description	Hub size	Cat. # Spring door	Cat. # Spring door	Cat. # Threaded cap only	Cat. #	Cable dia.	Cat. #	Cable dia.
<b>Style 1</b>								
3-wire,	$\frac{3}{4}$ "	ARE3312	AR331	AR337	APJ3375	0.39 - 0.875"	APR3355	0.39 - 0.875"
3-pole	1"	ARE3313						
4-wire,	$\frac{3}{4}$ "	ARE3412	AR341	AR347	APJ3475	0.39 - 0.875"	APR3455	0.87 - 1.20"
4-pole	1"	ARE3413						
5-wire,	1"	ARE3513	AR351		APJ3575	0.500 - 0.875"	APR3553	0.500 - 0.875"
5-pole								
<b>Style 2</b>								
2-wire,	$\frac{3}{4}$ "	ARE3322	AR332	AR338	APJ3385	0.39 - 0.875"	APR3365	0.39 - 0.875"
3-pole	1"	ARE3323						
3-wire,	$\frac{3}{4}$ "	ARE3422	AR342	AR348	APJ3485	0.39 - 0.875"	APR3465	0.39 - 0.875"
4-pole	1"	ARE3423						
4-wire,	1"	ARE3523	AR352		APJ3583	0.500 - 0.875"	APR3563	0.500 - 0.875"
5-pole								
					APJ3585	0.875 - 1.375"	APR3565	0.875 - 1.375"

For applicable 30A back boxes, see page 28.

## Dimensions (in inches):



<sup>Ⓐ</sup>For use on systems less than 60 Hz, the receptacles, plugs and connectors are for disconnect use only.

# Arktite heavy duty circuit breaking receptacle assemblies and housings

NEMA 4 Watertight

1P  
1P

30A, 600 VAC/250 VDC, 50<sup>Ⓟ</sup>-400 Hz

## CPK plug closure caps

### Applications:

CPK caps for Arktite plugs are used:

- Where portable equipment is on a standby basis and plugs are not in use
- To effectively protect insulation and contacts from excessive moisture, dirt, dust and corrosion
- With 30, 60, 100, 150 and 200 ampere plugs with fastening ring and standard 200 ampere plugs for the clamp door housing



### Ordering information:

Configuration	Cat. #
2P, 3P, 4P	CPK13
5P	CPK32

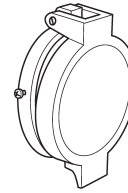
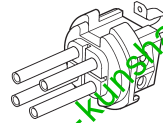
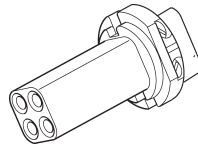
### Standard material:

- Copper-free aluminum

### Standard finish:

- Natural

### Replacement parts:



Configuration	Cat. # Receptacle interior	Cat. # Plug interior	Cat. # Spring door	Cat. # Screw cap
2W, 3P	ATP278	ATP273		
3W, 3P	ATP276	ATP271		
3W, 4P	ATP279	ATP274		
4W, 4P	ATP277	ATP272		
4W, 5P	ATP125	ATP109	N/A	N/A
5W, 5P	ATP94	ATP73		

### Replacement pin and sleeve contacts:

Description	Cat. # Receptacle	Cat. # Plug
Available as a kit only; 5 phase contacts and 1 ground contact included	AR30CONKIT	AP30CONKIT

<sup>Ⓟ</sup>For use on systems less than 60 Hz, the receptacles, plugs and connectors are for disconnect use only.

# Arktite heavy duty circuit breaking receptacle assemblies and housings

60A, 600 VAC/250 VDC, 50-400 Hz

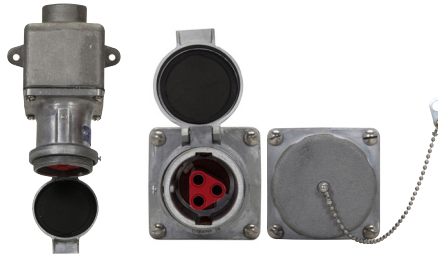
NEMA 4 Watertight

1P

## Ordering information:



Receptacle assembly



Receptacle



Mating plug

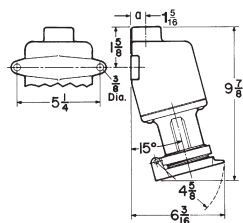


Mating connector

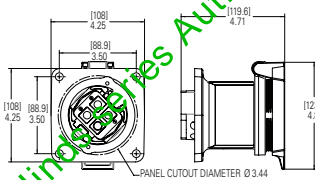
With AJ back boxes and angle adapters				With ARE back boxes	Receptacle housing only		Mating plugs		Mating connectors
Description	Hub size	Cat. # Spring door	Cat. # Threaded cap only	Cat. # Spring door	Cat. # Spring door	Cat. # Threaded cap only	Cable dia.	Cat. #	Cat. #
<b>Style 1</b>									
3-wire,	1"	AREA6313		ARE6313	AR631	AR637	0.50 - 1.15"	APJ6375	APR6355
3-pole	1 1/2"	AREA6314		ARE6314					
4-wire,	1 1/2"	AREA6414		ARE6414	AR641	AR647	0.50 - 1.15"	APJ6475	APR6455
4-pole	1 1/2"	AREA6415		ARE6415					
5-wire,	1 1/2"		AREA6574			AR657	0.50 - 1.15"	APJ6575	
5-pole	1 1/2"		AREA6575						
<b>Style 2</b>									
2-wire,	1"	AREA6323		ARE6323	AR632	AR638	0.50 - 1.15"	APJ6385	APR6365
3-pole	1 1/2"	AREA6324		ARE6324					
3-wire,	1 1/2"	AREA6424		ARE6424	AR642	AR648	0.50 - 1.15"	APJ6485	APR6465
4-pole	1 1/2"	AREA6425		ARE6425					
4-wire,	1 1/2"		AREA6584			AR658	0.75 - 1.15"	APJ6585	APR6565
5-pole	1 1/2"		AREA6585						APR6567

For applicable 60A back boxes, see pages 28-29.

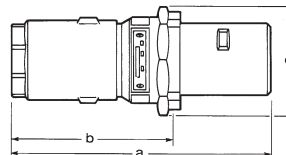
## Dimensions (in inches):



ARE assembly

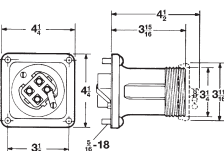
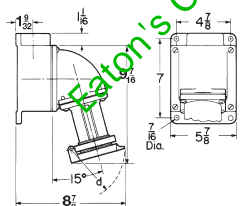


AR receptacle - spring door

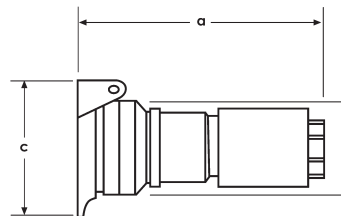


APJ plug

Config.	Plug			Connector		
	a	b	c	a	b	c
2P or 3P	8 1/2	5 3/4	3 3/8	6 1/2	3 3/8	2 15/16
4P	8 1/2	5 13/16	3 3/4	8 1/4	3 3/8	2 15/16
5P	9	6 3/16	4 7/16	8 1/4	3 3/8	3 1/4



AR receptacle - open and with cap



APR connector

<sup>A</sup>For use on systems less than 60 Hz, the receptacles, plugs and connectors are for disconnect use only.

# Arktite heavy duty circuit breaking receptacle assemblies and housings

NEMA 4 Watertight

1P  
1P

60A, 600 VAC/250 VDC, 50<sup>Ⓟ</sup>-400 Hz

## CPK plug closure caps

### Applications:

CPK caps for Arktite plugs are used:

- Where portable equipment is on a standby basis and plugs are not in use
- To effectively protect insulation and contacts from excessive moisture, dirt, dust and corrosion
- With 30, 60, 100, 150 and 200 ampere plugs with fastening ring and standard 200 ampere plugs for the clamp door housing



### Ordering information:

Configuration	Cat. #
2P, 3P	CPK32
4P	CPK34

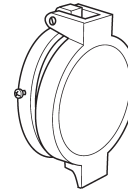
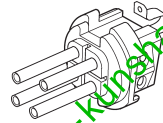
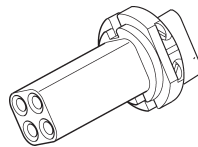
### Standard material:

- Copper-free aluminum

### Standard finish:

- Natural

### Replacement parts:



Configuration	Cat. # Receptacle interior	Cat. # Plug interior	Cat. # Spring door	Cat. # Screw cap
2W, 3P	ATP298	ATP293		
3W, 3P	ATP296	ATP291		
3W, 4P	ATP299	ATP294		
4W, 4P	ATP297	ATP292	QE52	QE34
4W, 5P	ATP385	ATP387	N/A	
5W, 5P	ATP384	ATP386	N/A	AR:11393B

### Replacement pin and sleeve contacts:

Description	Cat. # Receptacle	Cat. # Plug
Available as a kit only; 5 phase contacts and 1 ground contact included	AR60CONKIT	AP60CONKIT

<sup>Ⓟ</sup>For use on systems less than 60 Hz, the receptacles, plugs and connectors are for disconnect use only.

# Arktite heavy duty circuit breaking receptacle assemblies and housings

NEMA 4 Watertight

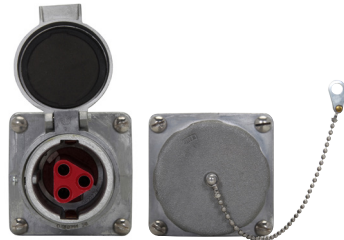
1P

100A and 150A, 600 VAC/250 VDC, 50<sup>o</sup>-400 Hz

## Ordering information:



Receptacle assembly



Receptacle



Mating plug

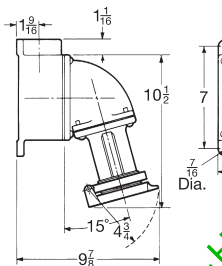


Mating connector

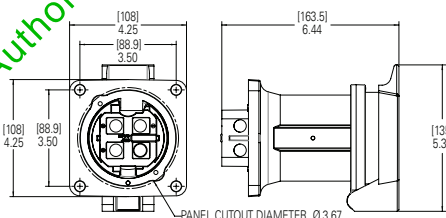
Receptacle assemblies			Receptacle housings only		Mating plugs		Mating connectors
Description	Hub size	Cat. # Spring door	Cat. # Spring door	Cat. # Threaded cap only	Cable dia.	Cat. #	Cat. #
<b>100A – Style 1</b>							
4-wire, 4-pole	1 1/2" 2"	AREA10415 AREA10416	AR1041	AR1047	0.875 - 1.70"	APJ10477	APR10457
<b>100A – Style 2</b>							
3-wire, 4-pole	1 1/2" 2"	AREA10425 AREA10426	AR1042	AR1048	0.875 - 1.70"	APJ10487	APR10467
<b>150A – Style 2</b>							
3-wire, 4-pole	–	N/A	AR1542	AR1548	0.875 - 1.70"	APJ15487	N/A

For applicable 100A and 150A back boxes, see pages 28-29.

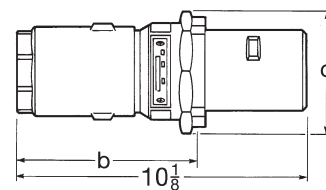
## Dimensions (in inches):



ARE assembly

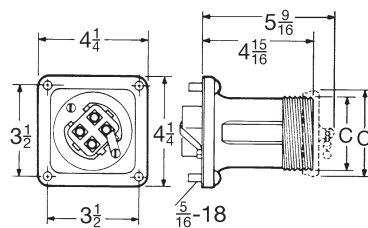


AR receptacle – spring door

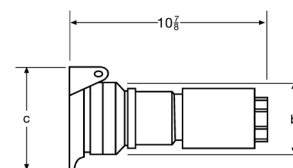


APJ plug

No. of poles	b	c
4	6 7/8	4 1/8



AR receptacle – open and with cap



APR connector

No. of poles	b	c
4	3 1/2	3 7/8

No. of poles	Housing	c
4	Open	3 7/8
4	With cap	3 7/8

<sup>A</sup>For use on systems less than 60 Hz, the receptacles, plugs and connectors are for disconnect use only.

# Arktite heavy duty circuit breaking receptacle assemblies and housings

NEMA 4 Watertight

1P  
1P

100A and 150A, 600 VAC/250 VDC, 50<sup>Ⓟ</sup>-400 Hz

## CPK plug closure caps

### Applications:

CPK caps for Arktite plugs are used:

- Where portable equipment is on a standby basis and plugs are not in use
- To effectively protect insulation and contacts from excessive moisture, dirt, dust and corrosion
- With 30, 60, 100, 150 and 200 ampere plugs with fastening ring and standard 200 ampere plugs for the clamp door housing



### Ordering information:

Configuration	Cat. #
2P, 3P	CPK62
4P	CPK64

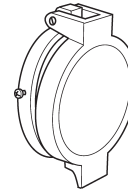
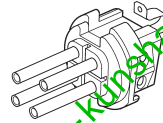
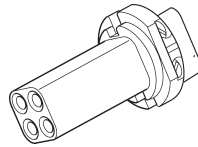
### Standard material:

- Copper-free aluminum

### Standard finish:

- Natural

### Replacement parts:



Configuration	Cat. # Receptacle interior	Cat. # Plug interior	Cat. # Spring door	Cat. # Screw cap
3W, 3P	ATP316	ATP311	QE53	QE62
3W, 4P	ATP319	ATP314	QE54	QE64
4W, 4P	ATP317	ATP312		

### Replacement pin and sleeve contacts:

Description	Cat. # Receptacle	Cat. # Plug
Available as a kit only; 5 phase contacts and 1 ground contact included	AR100CONKIT	AP100CONKIT

<sup>Ⓟ</sup>For use on systems less than 60 Hz, the receptacles, plugs and connectors are for disconnect use only.

# Arktite heavy duty circuit breaking receptacle assemblies

200A, 600 VAC/250 VDC, 50•-400 Hz

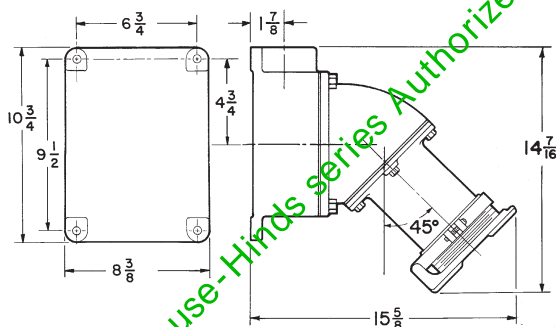
See pages 8-12 for general applications, features, grounding, standard materials and finishes, options, accessories, compliances, electrical rating ranges and wire sizes.

## Features:

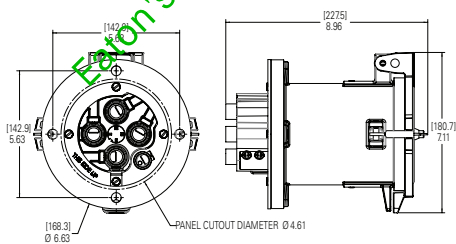
- Grounding contact wire terminators will accommodate ground wire of same size as phase wire
- Spring band contact design provides multiple points of electrical contact; improves electrical reliability and significantly reduces effort required for insertion and withdrawal
- Crimp/solder and mechanical lug type contacts are available
- Large wire wells are available for "extra flexible" wire
- Larger wire well size connectors will interchange with connectors of other wire well size of same amperage and contact configuration
- Mechanical lug connectors will interchange with crimp/solder connectors of the same amperage and contact configuration
- Self-closing spring doors on receptacles and cord connectors provide environmental sealing
- Threaded nuts provide positive plug retention
- Two-piece plug and cord connector design provides easy installation

1. For listing of additional back boxes, see page 29.
2. **S22 suffix for reverse interiors is available from factory only. Field conversion cannot be done.**
3. **Crimp/solder interiors cannot be converted to lug interiors.**
4. **Replacement interiors for standard units vs. S22 units vary in length. Specify the unit type when ordering parts.**

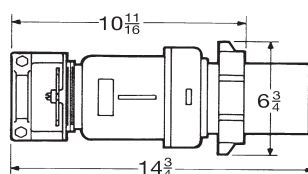
## Dimensions (in inches):



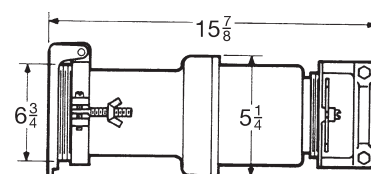
AREA assembly



AR receptacle



AP plug



APR connector

## CPK plug closure caps

### Applications:

CPK caps for Arktite plugs are used:

- Where portable equipment is on a standby basis and plugs are not in use
- To effectively protect insulation and contacts from excessive moisture, dirt, dust and corrosion
- With 30, 60, 100, 150 and 200 ampere plugs with fastening ring and standard 200 ampere plugs for the clamp door housing



### Ordering information:

Config.	Cat. #
4	CPK104

### Standard material:

- Copper-free aluminum

### Standard finish:

- Natural

## Wire mesh grips



### Applications:

Wire mesh grips are used:

- To provide secure cable termination
- To extend cable life
- With 20, 200 and 400 ampere plugs

### Features:

- Eliminate sharp radius of cable bend at the point where cable enters plug, thereby reducing cable failure
- Absorb longitudinal stresses placed on the point of termination caused by pulling the cable
- Gripping action increases in direct proportion to amount of tension applied to cable

### Standard material and finish:

- Stainless steel wire braid – natural

### Ordering Information:

Plug cable range	Grip range	Nominal grip length (in.)	Cat. #
1.375 - 1.875"	1.375 - 1.625"	8	K163
	1.625 - 1.875"	11	K188
1.875 - 2.500"	1.875 - 2.000"	10	K200
	2.000 - 2.250"	11 1/4	K225

<sup>A</sup>For use on systems less than 60 Hz, the receptacles, plugs and connectors are for disconnect use only.

# Arktite heavy duty circuit breaking receptacle assemblies

NEMA 3R

1P  
1P

200A, 600 VAC/250 VDC, 50<sup>Ⓟ</sup>-400 Hz

## Ordering information – mechanical lug termination:



Receptacle assembly



Receptacle with mechanical lug



Mating plug



Mating connector

Receptacle assembly with AJ back boxes and angle adapters			Receptacle housings only	Cable dia.	Mating plugs	Mating connectors
Description	Hub size	Cat. #	Cat. #		Cat. #	Cat. #
<b>Style 1 – wire well takes 0.687" maximum conductor size</b>						
4-wire, 4-pole	2"	AREAL20416	ARL2041	0.875 - 1.375"	APL20455	APRL20415
	2 1/2"	AREAL20417		1.375 - 1.875"	APL20457	APRL20417
				1.875 - 2.500"	APL20458	APRL20418
				2.500 - 3.000"	APL204513	APRL204113
<b>Style 2 – wire well takes 0.687" maximum conductor size</b>						
3-wire, 4-pole	1 1/2"	AREAL20425	ARL2042	0.875 - 1.375"	APL20465	APRL20425
	2"	AREAL20426		1.375 - 1.875"	APL20467	APRL20427
	2 1/2"	AREAL20427		1.875 - 2.500"	APL20468	APRL20428

## Ordering information – crimp/solder termination:

Receptacle assembly with AJ back boxes and angle adapters			Receptacle housings only	Cable dia.	Mating plugs	Mating connectors
Description	Hub size	Cat. #	Cat. #		Cat. #	Cat. #
<b>Style 1 – wire well takes 0.56" maximum conductor size</b>						
4-wire, 4-pole	2"	AREA20416	AR2041	0.875 - 1.375"	AP20455	APR20415
	2 1/2"	AREA20417		1.375 - 1.875"	AP20457	APR20417
				1.875 - 2.500"	AP20458	APR20418
<b>Style 1 – wire well takes 0.75" maximum conductor size</b>						
4-wire, 4-pole	2"	AREA204126	AR20412	1.375 - 1.875"	AP204511	APR204111
	2 1/2"	AREA204127		1.875 - 2.500"	AP204512	APR204112
				2.500 - 3.000"	AP204513	APR204113
<b>Style 2 – wire well takes 0.56" maximum conductor size</b>						
3-wire, 4-pole	1 1/2"	AREA20425	AR2042	0.875 - 1.375"	AP20465	APR20425
	2"	AREA20426		1.375 - 1.875"	AP20467	APR20427
	2 1/2"	AREA20427		1.875 - 2.500"	AP20468	APR20428
<b>Style 2 – wire well takes 0.75" maximum conductor size</b>						
3-wire, 4-pole	2"	AREA204225	AR20422	1.375 - 1.875"	AP204611	APR204211
	2 1/2"	AREA204226		1.875 - 2.500"	AP204612	APR204212
	2 1/2"	AREA204227				

<sup>Ⓟ</sup> For use on systems less than 60 Hz, the receptacles, plugs and connectors are for disconnect use only.

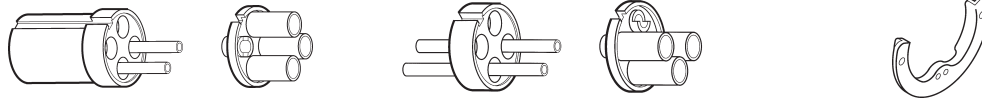
# Arktite heavy duty circuit breaking receptacle assemblies

Weatherproof

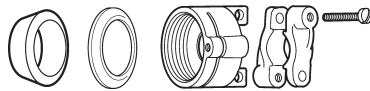
1P

200A, 600 VAC/250 VDC, 50-400 Hz

## Replacement parts:

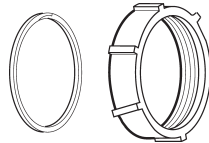


Configuration	Receptacle interior		Plug interior		Brass retaining shoe	
	Cat. # 0.56" wire well	Cat. # 0.75" wire well	Cat. # 0.56" wire well	Cat. # 0.75" wire well	Cat. # 0.56" wire well	Cat. # 0.75" wire well
<b>200A standard and S4</b>						
3W, 4P	ATP403	ATP404	ATP435	ATP436	0490337	0490337
4W, 4P	ATP399	ATP400	ATP431	ATP432	0490331	0490332
<b>200A S22 and S4 S22</b>						
3W, 4P	ATP419	ATP420	ATP451	ATP452	0490337	0490337
4W, 4P	ATP415	ATP416	ATP447	ATP448	0490331	0490332



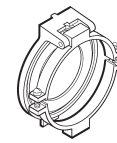
Cord grip assembly

Cord dia. range	Cat. #
0.875 - 1.375"	AP2 KIT1 M80
1.375 - 1.875"	AP2 KIT2 M80
1.875 - 2.500"	AP2 KIT3 M80



Plug clamp nut

Config.	Cat. #
2W, 3P	AP:0401965
3W, 3P	AP:0401965
2W, 3P	AP:0401964
3W, 3P	AP:0401964

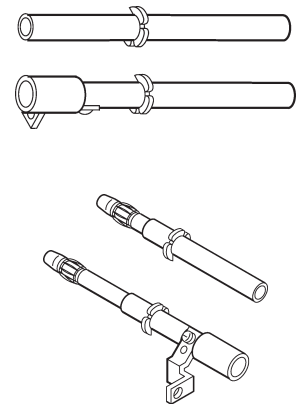


Recept. spring door

Cat. #
AR:0401502-2
AR:0401502-1

## Replacement pin and sleeve contacts:

Type	Receptacle		Plug	
	Cat. #	Cat. #	Cat. #	Cat. #
<b>200A standard and S4</b>				
	0.56" wire well	0.75" wire well	0.56" wire well	0.75" wire well
Phase contact	0490339	0490340	0490319	0490320
Ground contact	0490343	0490344	0490323	0490324
<b>200A S22 and S4 S22</b>				
	0.56" wire well	0.75" wire well	0.56" wire well	0.75" wire well
Phase contact	0490351	0490352	0490355T	0490356
Ground contact	0490357	0490348	0490359	0490360
<b>200A mechanical lug</b>				
	0.687" wire well		0.687" wire well	
Phase contact	ARL:0403688 1		APL:0403678 1	
Ground contact	ARL:0403687 1		APL:0403677 1	



Ⓢ For use on systems less than 60 Hz, the receptacles, plugs and connectors are for disconnect use only.

# Arktite heavy duty receptacle assemblies

400A, 600 VAC/250 VDC, 50-400 Hz

Weatherproof

1P  
1P

## Features:

- Grounding contact wire terminators will accommodate ground wire of same size as phase wire
- Spring band contact design provides multiple points of electrical contact; improves electrical reliability and significantly reduces effort required for insertion and withdrawal
- Crimp/solder type contacts are standard
- Large wire wells are available for "extra flexible" wire
- Larger wire well size connectors will interchange with connectors of other wire well size of same amperage and contact configuration
- Self-closing spring doors on receptacles and cord connectors provide environmental sealing
- Threaded nuts provide positive plug retention
- Two-piece plug and cord connector design provides easy installation
- For disconnect use only – not for current interrupting

1. For listing of additional back boxes, see page 29. Illustration shows 3 blank plates and 1 hub plate.
2. S22 suffix for reverse interiors is available from factory only. Field conversion cannot be done.
3. Replacement interiors for standard units vs. S22 units vary in length. Specify the unit type when ordering parts.

## Wire mesh grips



## Applications:

Wire mesh grips are used:

- To provide secure cable termination
- To extend cable life
- With 20, 200 and 400 ampere plugs

## Features:

- Eliminate sharp radius of cable bend at the point where cable enters plug, thereby reducing cable failure
- Absorb longitudinal stresses placed on the point of termination caused by pulling the cable
- Gripping action increases in direct proportion to amount of tension applied to cable

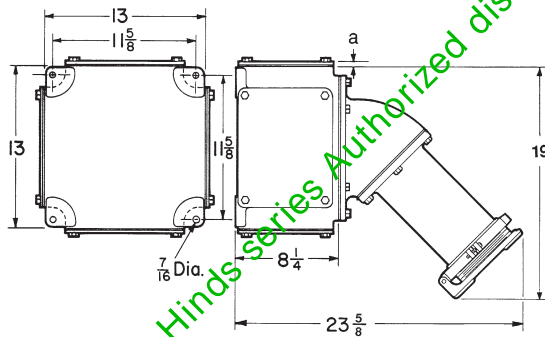
## Standard material and finish:

- Stainless steel wire braid – natural

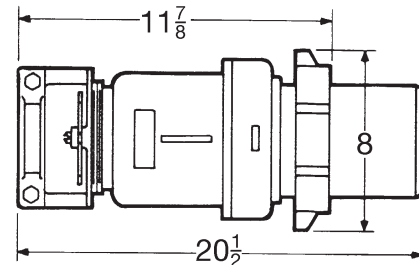
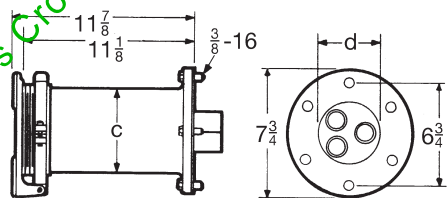
## Ordering information:

Plug cable range	Grip range	Nominal grip length (in.)	Cat. #
1.375 - 1.875"	1.375 - 1.625"	8	K163
	1.625 - 1.875"	11	K188
1.875 - 2.500"	1.875 - 2.000"	10	K200
	2.000 - 2.250"	11¼	K225

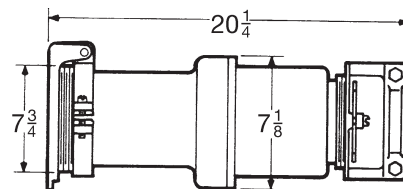
## Dimensions (in inches):



AR receptacles



AP plugs



APR connectors

## AREX assemblies

Description	a	No. of poles	c	d
With blank hub plate	5/16	3	5 7/16	4 3/16
With hub plate max.	4 7/8	4	5 11/16	4 11/16

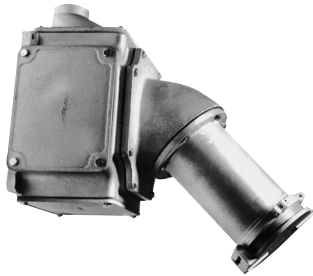
# Arktite heavy duty receptacle assemblies

400A, 600 VAC/250 VDC, 50-400 Hz

Weatherproof

1P

## Ordering information:



Receptacle assembly



Receptacle



Mating plug



Mating connector

With AJ back boxes and angle adapters <sup>A</sup>			Receptacle housings only		Mating plugs		Mating connectors	
Description	Hub size	Cat. # Spring door cover	Cat. # Spring door	Cable dia.	Cat. #	Cat. #	Cat. #	Cat. #
<b>Style 1 - wire well takes 0.84" maximum conductor size</b>								
3-wire, 3-pole	2 1/2" 3"	AREX40317 AREX40318	AR4031	1.375 - 1.875" 1.875 - 2.500"	AP40357 AP40358	APR40317 APR40318		
4-wire, 4-pole	2 1/2" 3"	AREX40417 AREX40418	AR4041	1.375 - 1.875" 1.875 - 2.500"	AP40457 AP40458	APR40417 APR40418		
<b>Style 1 - wire well takes 1.25" maximum conductor size</b>								
3-wire, 3-pole	3" 3 1/2"	AREX403128 AREX403129	AR40312	2.500 - 3.000" 3.000 - 3.800"	AP403510 AP403512	APR403110 APR403112		
4-wire, 4-pole	4" 5"	AREX4041210 AREX4041212	AR40412	2.500 - 3.000" 3.000 - 3.800"	AP404510 AP404512	APR404110 APR404112		
<b>Style 2 - wire well takes 0.84" maximum conductor size</b>								
2-wire, 3-pole	2" 2 1/2"	AREX40326 AREX40327	AR4032	1.375 - 1.875" 1.875 - 2.500"	AP40367 AP40368	APR40327 APR40328		
3-wire, 4-pole	2 1/2" 3"	AREX40427 AREX40428	AR4042	1.375 - 1.875" 1.875 - 2.500"	AP40467 AP40468	APR40427 APR40428		
<b>Style 2 - wire well takes 1.25" maximum conductor size</b>								
2-wire, 3-pole	3" 3 1/2"	AREX403228 AREX403229	AR40322	2.500 - 3.000" 3.000 - 3.500"	AP403610 AP403612	APR403210 APR403212		
3-wire, 4-pole	4" 5"	AREX4042210 AREX4042212	AR40422	2.500 - 3.000" 3.000 - 3.500"	AP404610 AP404612	APR404210 APR404212		

For applicable 400A back boxes, see page 29.

<sup>A</sup>Hub plates and blank plates may be interchanged to permit conduit feed from bottom or sides.