

Cam-Lok™ F series connectors are specifically designed to meet the needs of harsh industrial welding applications. F series plugs and receptacles offer superior reliability and safety while reducing downtime.

Applications:

- Specifically designed for industrial applications where electrical equipment is exposed to harsh environments
- Ideal for welding equipment, power distribution panels, patch panels and heat treating applications, and are insulated for safety with reinforced thermoplastic or epoxy, or watertight elastomeric

Certifications and compliances:

- Meets OSHA requirements for welding connectors
- Meets NEC Code requirements for listed connectors that are of the locking type

Environmental rating:

- NEMA 3

Standard materials:

- Accepts cable sizes #8 AWG - 4/0
- Insulator – reinforced thermoplastic (E1010, E1012); reinforced epoxy (E1012 high temperature); elastomeric (E1012 only)
- Contact – brass; silver-plated brass



Electrical ratings:

- 120 VAC
- Up to 315 amperes continuous, 550 amperes intermittent

Temperature ratings:

- Standard – up to 105°C
- High temperature – up to 180°C (365°F)

Eaton's Crouse-Hinds series Authorized distributor - kunshan beiyuan electric co.,ltd./ csr@ksbyel.com

Features:



Cam-Lok F series E1010 plugs and receptacles

NEMA 1

10P

Cable size #8 - #4 AWG

120 VAC, up to 150A continuous, 200A intermittent

F series E1010, reinforced thermoplastic

Features:

- Double cam principle provides a positive, vibration-proof connection
- Self-compensating for wear
- No moving contact surfaces, eliminating arcing or burning
- Superior electromechanical connections
- Locked contacts will withstand a pulling force of 1,000 lbs.
- 1/3 of a turn assures a high pressure contact approaching 600 lbs. per sq. in., providing minimum resistance
- Contacts carefully machined from a high conductivity brass to provide a smooth sliding fit and easy locking action
- Thermoplastic insulators molded from colorfast material, color-coded for easy identification
- Panel receptacles are safety insulated for direct mounting to steel panels
- Accepts a wide range of cable sizes

Ordering information:

Plugs



E1010-61

	Cable size	Color	Male		Female		Cat. # Retaining pin
			Cat. # Complete	Cat. # Insulator	Cat. # Complete	Cat. # Insulator	
Set screw	#8 - #4	Red	E1010-61	201281-410RM	E1010-71	201281-410RF	100091-2
	#8 - #4	Black	E1010-62	201281-410BM	E1010-72	201281-410BF	100091-2
Solder	#8 - #4	Red	E1010-101	201281-410RM	E1010-111	201281-410RF	100091-2
	#8 - #4	Black	E1010-102	201281-410BM	E1010-112	201281-410BF	100091-2

Female terminal connectors

Cable size	Color	Cat. # Angle style	Cat. # Offset style
#8 - #4	Red	E1010-181	E1010-201
#8 - #4	Black	E1010-182	E1010-202

Bolt hole: 5/16"



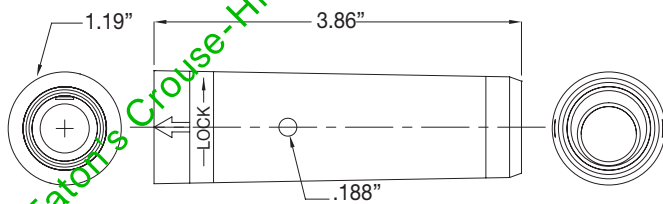
E1010-308

High impact plastic receptacles

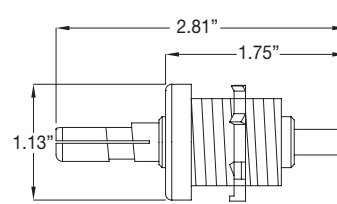
Cable size	Color	Cat. #	Description
#8 - #4	Red	E1010-301	Female receptacle
#8 - #4	Black	E1010-302	Female receptacle
#8 - #4	Red	E1010-307	Male receptacle
#8 - #4	Black	E1010-308	Male receptacle

To order single packaged products, add suffix 'K' to the complete catalog number.

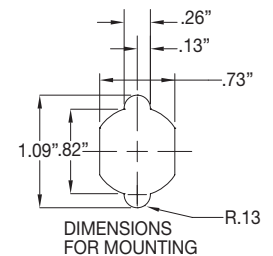
Dimensions:



Male and female plug



Male receptacle



plugs

Cable size #2 AWG - 4/0

120 VAC, up to 315A continuous, 550A intermittent

F series E1012, reinforced thermoplastic

Features:

- Double cam principle provides a positive, vibration-proof connection
- Self-compensating for wear
- No moving contact surfaces, eliminating arcing or burning
- Superior electromechanical connections
- Locked contacts will withstand a pulling force of 1,000 lbs.
- 1/3 of a turn assures a high pressure contact approaching 600 lbs. per sq. in., providing minimum resistance
- Contacts carefully machined from a high conductivity brass to provide a smooth sliding fit and easy locking action
- Thermoplastic insulators molded from colorfast material, color coded for easy identification
- Accepts a wide range of cable sizes

Ordering information:



E1012-66

Set screw plugs

Cable size	Color	Male		Female		
		Cat. # Complete	Cat. # Insulator	Cat. # Complete	Cat. # Insulator	Cat. # Retaining pin
#2 - 1/0	Red	E1012-61	201281-612RM	N/A	N/A	100091-4
#2 - 1/0	Black	E1012-62	201281-612BM	N/A	N/A	100091-4
1/0 - 3/0	Red	E1012-63	201281-712RM	E1012-71	201281-712RF	100091-5
1/0 - 3/0	Black	E1012-64	201281-712BM	E1012-72	201281-712BF	100091-5
3/0 - 4/0	Red	E1012-65	201281-812RM	E1012-73	201281-812RF	100091-6
3/0 - 4/0	Black	E1012-66	201281-812BM	E1012-74	201281-812BF	100091-6

Solder plugs

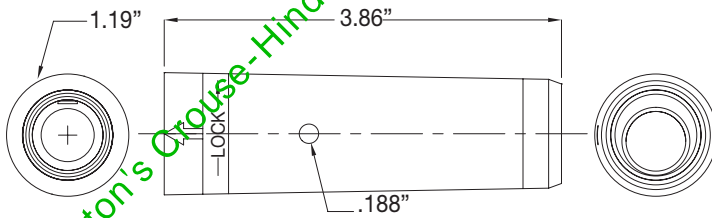


E1012-71

Cable size	Color	Male		Female		
		Cat. # Complete	Cat. # Insulator	Cat. # Complete	Cat. # Insulator	Cat. # Retaining pin
#2 - 1/0	Red	E1012-101	201281-612RM	N/A	N/A	100091-4
#2 - 1/0	Black	E1012-102	201281-612BM	N/A	N/A	100091-4
1/0 - 3/0	Red	E1012-103	201281-712RM	E1012-111	201281-712RF	100091-5
1/0 - 3/0	Black	E1012-104	201281-712BM	E1012-112	201281-712BF	100091-5
3/0 - 4/0	Red	E1012-105	201281-812RM	E1012-113	201281-812RF	100091-6
3/0 - 4/0	Black	E1012-106	201281-812BM	E1012-114	201281-812BF	100091-6

To order single packaged products, add suffix 'K' to the complete catalog number.

Dimensions:



Male and female plug

plugs

Cable size #2 AWG - 4/0

120 VAC, up to 315A continuous, 550A intermittent

F series E1012, elastomeric

Features:

- Double cam principle provides a positive, vibration-proof connection
- Self-compensating for wear
- No moving contact surfaces, eliminating arcing or burning
- Superior electromechanical connections
- Locked contacts will withstand a pulling force of 1,000 lbs.
- 1/3 of a turn assures a high pressure contact approaching 600 lbs. per sq. in., providing minimum resistance
- Contacts carefully machined from a high conductivity brass to provide a smooth sliding fit and easy locking action
- Watertight elastomeric insulators molded from colorfast material, color-coded for easy identification
- Accepts a wide range of cable sizes

Material characteristics:

- Insulator – TPE
- Temperature rating – -40°C to 105°C

Ordering information:



E1012-8350

Single set screw plugs

Cable size	Color	Male			Female		
		Cat. # Complete	Cat. # Contact	Cat. # Insulator	Cat. # Complete	Cat. # Contact	Cat. # Insulator
#2 - 2/0	Black	E1012-8300	A200081-1	A200068-19	E1012-8325	A200067-1	A200069-19
#2 - 2/0	Red	E1012-8302	A200081-1	A200068-21	E1012-8327	A200067-1	A200069-21
2/0 - 4/0	Black	E1012-8312	A200080-1	A200068-13	E1012-8337	A200066-1	A200069-13
2/0 - 4/0	Red	E1012-8314	A200080-1	A200068-15	E1012-8339	A200066-1	A200069-15

Double set screw plugs

Cable size	Color	Male			Female		
		Cat. # Complete	Cat. # Contact	Cat. # Insulator	Cat. # Complete	Cat. # Contact	Cat. # Insulator
#2 - 2/0	Black	E1012-8350	A200643-1	A200068-19	E1012-8375	A200640-1	A200069-19
#2 - 2/0	Red	E1012-8352	A200643-1	A200068-21	E1012-8377	A200640-1	A200069-21
2/0 - 4/0	Black	E1012-8362	A200644-1	A200068-13	E1012-8387	A200642-1	A200069-13
2/0 - 4/0	Red	E1012-8364	A200644-1	A200068-15	E1012-8389	A200642-1	A200069-15



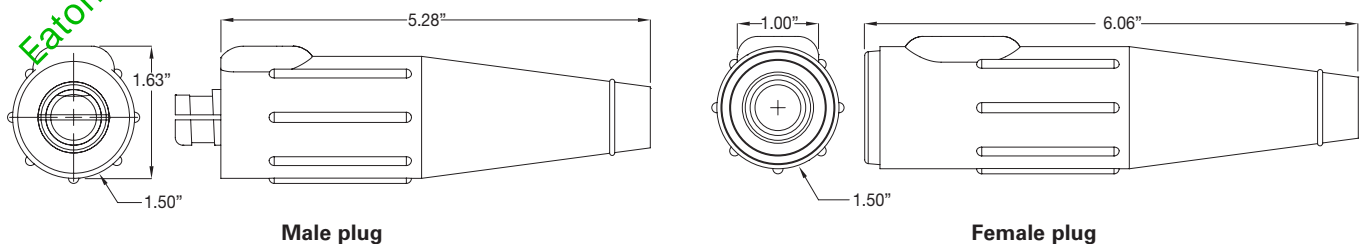
E1012-8377

Crimp or solder plugs

Cable size	Color	Male			Female		
		Cat. # Complete	Cat. # Contact	Cat. # Insulator	Cat. # Complete	Cat. # Contact	Cat. # Insulator
#2 - #1	Black	E1012-8006	A200036-30	A200068-19	E1012-8056	A200037-35	A200069-19
#2 - #1	Red	E1012-8008	A200036-30	A200068-21	E1012-8058	A200037-35	A200069-21
1/0 - 2/0	Black	E1012-8012	A200036-31	A200068-19	E1012-8062	A200037-36	A200069-19
1/0 - 2/0	Red	E1012-8014	A200036-31	A200068-21	E1012-8064	A200037-35	A200069-21
3/0 - 4/0	Black	E1012-8030	A200038-30	A200068-13	E1012-8080	A200035-53	A200069-13
3/0 - 4/0	Red	E1012-8032	A200038-30	A200068-15	E1012-8082	A200035-53	A200069-15

To order single packaged products, add suffix 'K' to the complete catalog number.

Dimensions:



Cam-Lok F series E1012

high temperature plugs and receptacles

NEMA 1

10P

Cable size 2/0 - 4/0

120 VAC, up to 400A continuous, 670A intermittent

F series E1012 high temperature, reinforced epoxy

Features:

- Double cam principle provides a positive, vibration-proof connection
- Self-compensating for wear
- No moving contact surfaces, eliminating arcing or burning
- Superior electromechanical connections
- Locked contacts will withstand a pulling force of 1,000 lbs.
- 1/3 of a turn assures a high pressure contact approaching 600 lbs. per sq. in., providing minimum resistance
- Contacts carefully machined from a high conductivity brass to provide a smooth sliding fit and easy locking action
- Material designed to deliver superior performance in high temperature applications up to 365°F (180°C)

Material characteristics:

- Insulator – reinforced thermoplastic or TPE
- Temperature rating – -40°C to 105°C

Ordering information:



E1012-88



E1012-502

Double set screw plugs

Male

Cable size	Contact material	Color	Cat. # Complete	Cat. # Contact	Cat. # Insulator	Cat. # Retaining pin
2/0 - 4/0	Brass	Black	E1012-88	200639-4	101037-2	100091-22
2/0 - 4/0	Silver plate	Black	E1012-85	200639-9	101037-2	100091-22

Female

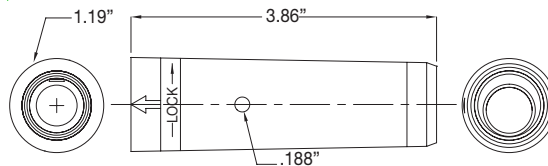
Cable size	Contact material	Color	Cat. # Complete	Cat. # Contact	Cat. # Insulator	Cat. # Retaining pin
2/0 - 4/0	Brass	Black	E1012-98	200641-10	101036-2	100091-22
2/0 - 4/0	Silver plate	Black	E1012-95	200641-11	101036-2	100091-22

High temperature receptacles

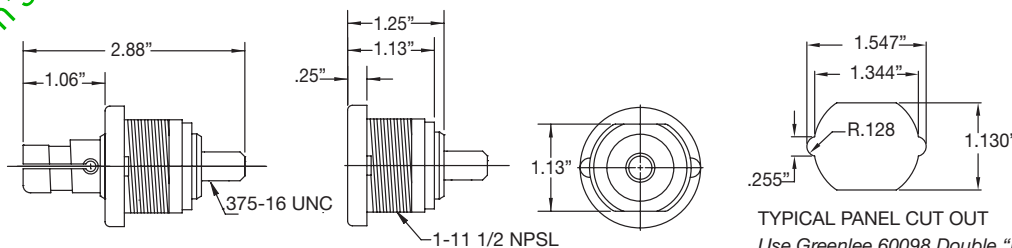
Cable size	Contact material	Color	Cat. #	Description
2/0 - 4/0	Brass	Black	E1012-502	Female receptacle
2/0 - 4/0	Brass	Black	E1012-508	Male receptacle

To order single packaged products, add suffix 'K' to the complete catalog number.

Dimensions:



Male and female high temperature plug



Male and female high temperature receptacles

TYPICAL PANEL CUT OUT
Use Greenlee 60098 Double "D" Punch
Rat Tail File for Notches

10P

Cam-Lok F series E1012 receptacles and accessories

NEMA 3R

10P

Cable size #2 AWG - 4/0

120 VAC, up to 315A continuous, 550A intermittent

F series E1012, reinforced thermoplastic or elastomeric

Features:

- Double cam principle provides a positive, vibration-proof connection
- Self-compensating for wear
- No moving contact surfaces, eliminating arcing or burning
- Superior electromechanical connections
- Locked contacts will withstand a pulling force of 1,000 lbs.
- 1/3 of a turn assures a high pressure contact approaching 600 lbs. per sq. in., providing minimum resistance
- Contacts carefully machined from a high conductivity brass to provide a smooth sliding fit and easy locking action
- Body molded from colorfast material, color-coded for easy identification
- Panel receptacles are safety insulated for direct mounting to steel panels
- Accepts a wide range of cable sizes

Material characteristics:

- Insulator – reinforced thermoplastic or TPE
- Temperature rating – -40°C to 108°C

Ordering information:



A201317-6

Female terminal connectors

Cable size	Color	Cat. # Angle style	Cat. # Offset style
#2 - 3/0	Red	A201317-1	A201317-5
#2 - 3/0	Black	A201317-2	A201317-6
4/0	Red	A201317-3	N/A
4/0	Black	A201317-4	N/A

Bolt hole: 1/2"

Three-way 'T' connectors

Cable size	Color	Cat. # Paralleling 'T' M-M-F	Cat. # Tapping 'T' M-F-F
#2 - 4/0	Red	E1012-2324	E1012-2314
#2 - 4/0	Black	E1012-2326	E1012-2312



E1012-2324

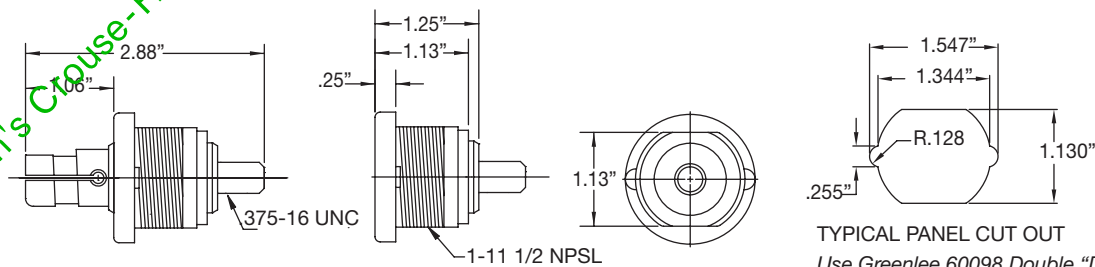
High impact receptacles

Cable size	Contact material	Color	Cat. #	Description
#2 - 3/0	Brass	Red	E1012-301	Female receptacle
#2 - 3/0	Brass	Black	E1012-302	Female receptacle
#2 - 4/0	Brass	Red	E1012-303	Female receptacle
#2 - 4/0	Brass	Black	E1012-304	Female receptacle
#2 - 4/0	Copper	Red	E1012-305	Female receptacle
#2 - 4/0	Copper	Black	E1012-306	Female receptacle
#2 - 4/0	Brass	Red	E1012-307	Male receptacle
#2 - 4/0	Brass	Black	E1012-308	Male receptacle

Maximum torque: 20 ft.-lbs.

To order single packaged products, add suffix 'K' to the complete catalog number.

Dimensions:



Male and female receptacles

TYPICAL PANEL CUT OUT
Use Greenlee 60098 Double "D" Punch
Rat Tail File for Notches